

What's next?

Thanks for bringing _____ in to see us. We performed a test that detects the presence of *Leishmania* antibodies.

We want you to know that _____ tested positive for antibodies to *Leishmania*. Let's talk about what's next.

Test results



Leishmania detected!

_____ tested positive for antibodies to *Leishmania*. This means he/she has been bitten by an infected sand fly. While there is no cure for leishmaniasis, we can follow up with some baseline and monitoring testing to control the risk of disease development or progression in your dog.

We are here to help, so call us if you have questions.

In good health,
Your friends at

Next steps: We have a plan!

Finding out _____ has a positive result can be concerning. That's why we've built a simple plan to determine if treatment is needed.

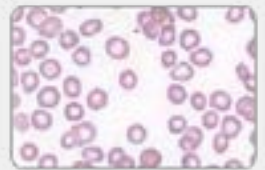
Step 1: What does this mean?

- + _____ was bitten by a sand fly that carried *Leishmania*, the organism that causes leishmaniasis. We now know that antibodies to *Leishmania* were found in the blood sample, which indicates an infection.
- + Though dogs may not display clear signs of *Leishmania* infection, this dangerous infection may cause lethargy, weight loss, decreased appetite, fever, enlarged lymph nodes, dermatitis, increased water consumption, increased urination, and other systemic clinical signs.
- + Rest assured, _____ cannot directly transmit *Leishmania* to you or your family.

Step 2: Does _____ need treatment?

We need to investigate if _____ should be treated for leishmaniasis. Thankfully, some simple tests can help us make this decision. Tests may include these:

- + Measurement of *Leishmania* antibody levels
- + Complete blood count
- + Biochemical profile
- + Urinalysis



Give our office a call, and we can make a plan together.

Step 3: What does treatment look like?

The follow-up tests will help us evaluate if _____ would benefit from treatment or if we need further monitoring for progression of disease. Sometimes additional treatments may be necessary, depending on how his/her immune system manages the infection. Some dogs' immune systems control the infection and don't require treatment immediately but will need to be monitored regularly to assess immune response and manage the disease.

Step 4: What can I do next?

- + We'll continue to include a test to monitor changes during annual checkups as disease status can change over time.
- + It's also important to ensure _____ is protected from sand flies. Please ask your veterinarian for recommendations for your pet.
- + Keep up with sand fly control and proper repellents to best protect both your dog and human family members.

This information is provided for educational purposes only and is being provided to you at the request of the attending veterinarian at the veterinary hospital indicated above.

© 2023 IDEXX Laboratories, Inc. All rights reserved. • 2690881-00 • The IDEXX Privacy Policy is available at idexx.com. All ®/TM marks are owned by IDEXX Laboratories, Inc. or its affiliates in the United States and/or other countries.