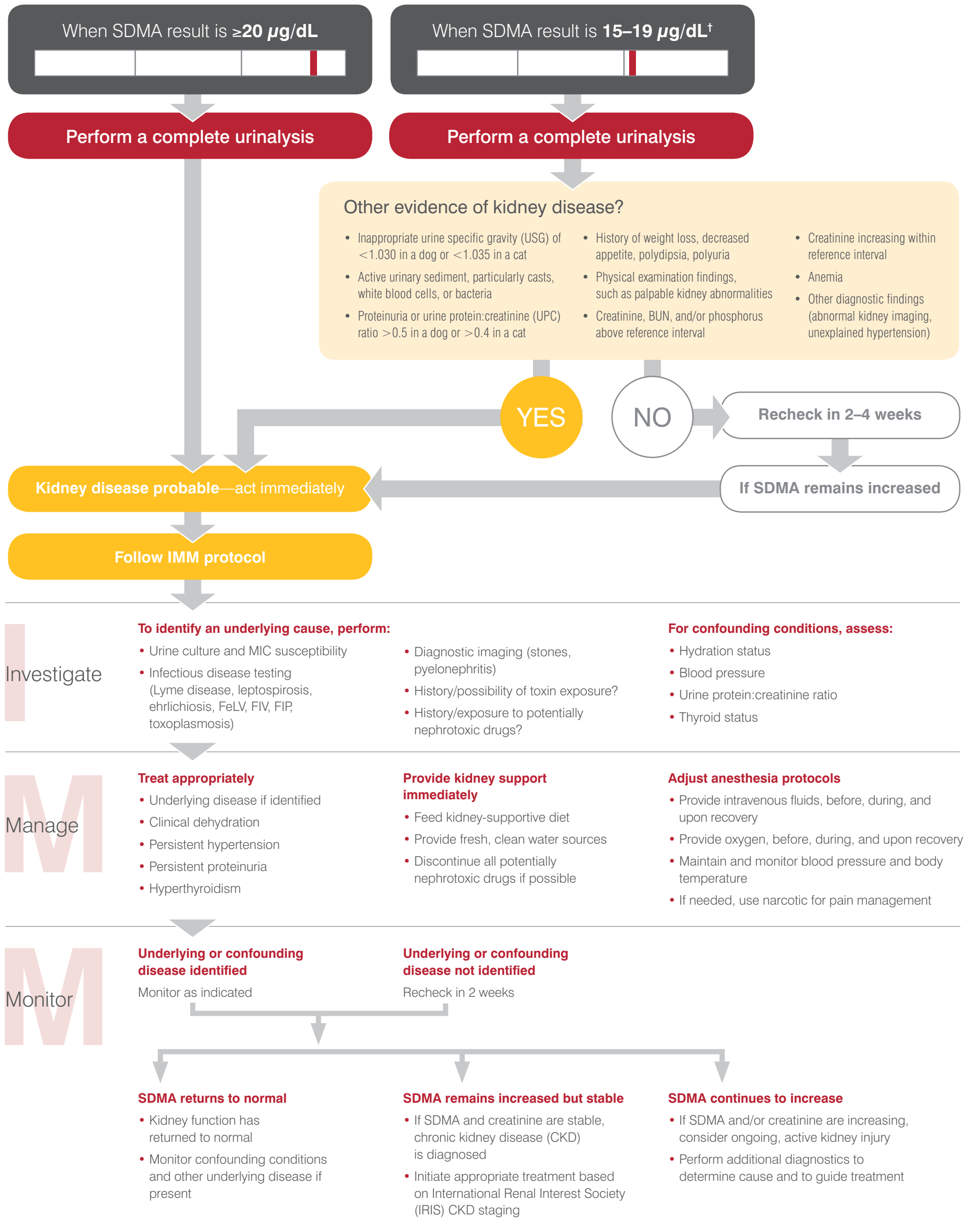


Interpreting IDEXX SDMA™ Test results and what to do when SDMA is increased

SDMA can increase with both active or acute kidney injury, as well as chronic kidney disease.

Take action when SDMA* results are increased. Follow this algorithm to determine if kidney disease is probable and what steps you should take to investigate, manage, and monitor the disease.



The IDEXX SDMA™ Test is more reliable than creatinine.

SDMA increases earlier than creatinine in dogs and cats as kidney function decreases. And unlike creatinine, SDMA is not impacted by muscle mass.‡

*Symmetric dimethylarginine.

‡To see the proof and a complete list of references, visit idexx.eu/sdma.

†SDMA reference interval is $0\text{--}14 \mu\text{g/dL}$. However, in puppies, the SDMA reference interval is $0\text{--}16 \mu\text{g/dL}$. SDMA reference interval studies are underway for kittens and greyhounds, and results may also be slightly higher and should be interpreted in light of other findings.

Visit www.idexx.eu/sdma to learn more about the IDEXX SDMA™ Test

Complete Solutions

IDEXX
LABORATORIES